



## **Blow / Fill / Seal Specialists**

*Over 35 years in the BFS Industry*

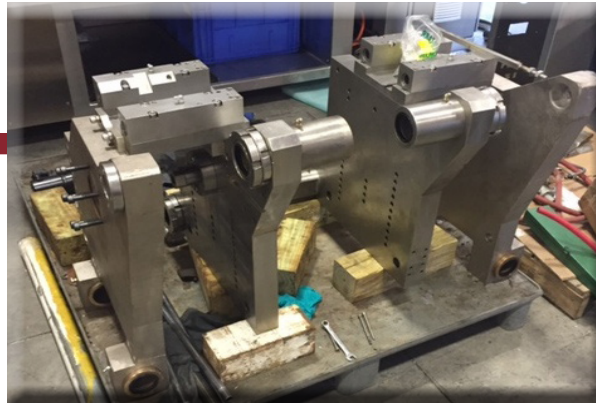


- ★ Rebuilt BFS Machinery Delivered "Like-New" at an Unbelievable Cost
- ★ Turnkey Mold & Parts Supply from Design Through Manufacturing
- ★ Full Supply of New & Rebuilt Complementary Equipment
- ★ Used "As-Is" Equipment Sales

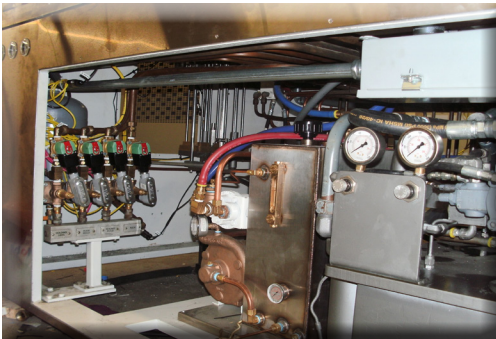
# BLOW/FILL/SEAL REBUILDING PROCESS



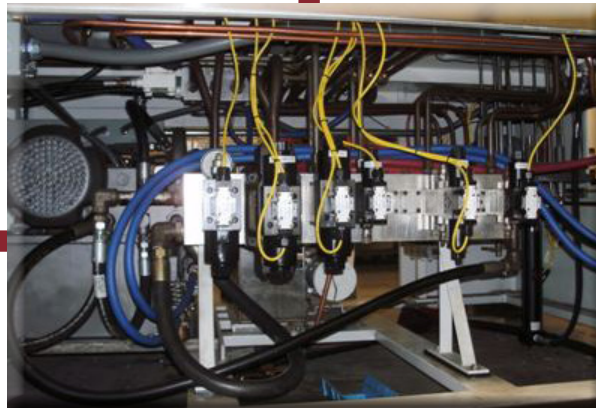
**Machines are completely stripped** to the bare frame. All surfaces cleaned, polished or painted. Extruder barrel and screw removed for complete overhaul. Gear box completely rebuilt. Repaint all mechanical spaces with white epoxy.



**Mold carriage** is completely disassembled and refinished. New bushings, tie bars and hydraulic cylinders installed. New rails installed in the base.



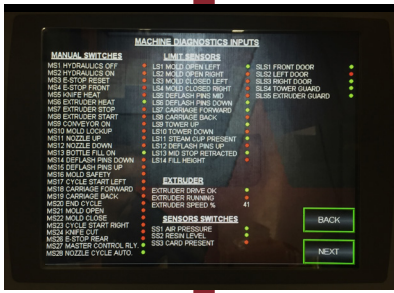
Under the base, **hydraulic power pack** is completely overhauled. New Hi/Low pressure pumps and heat exchangers added as are all new hoses. Mokon extruder cooling unit is replaced with new. All ASCO vacuum valves are new. Wiring simplified - LAN PLC eliminates "Home Run" device connection.



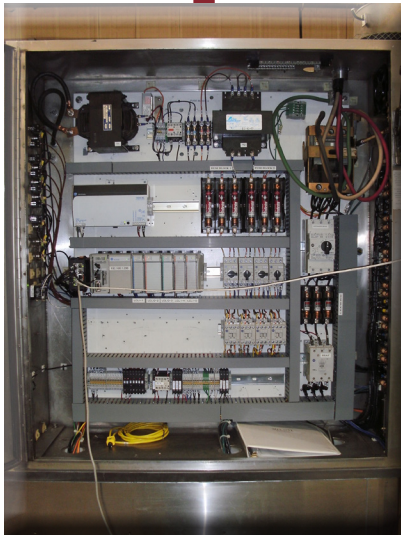
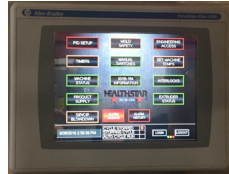
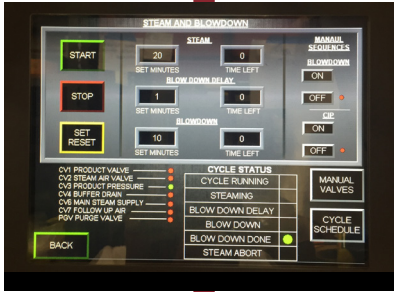
**Hydraulic control valves** are changed from 120VAC to NEW 24 VDC for added safety.



**Completely new CIP/SIP system**  
New sanitary control valves, filter housing and buffer tank are provided as part of the system. The system is completely automatic and a separate MMI is next to the system for easy operator control.



**Man Machine Interface (MMI)** All buttons on the front panel go directly to device net device inside and communicate by single Ethernet wire to the PLC. Large color MMI Touch Screen is easy to read with intuitive screens that were designed by people with years of BFS operating experience.



Old **electrical panel is completely stripped** to bare mounting board. The **finished electrical cabinet** is completely simplified as a result of the elimination of "Home Run Wiring".

Only the black Ethernet IP cable goes back to PLC. Local devices are easily plugged in or out for fast repair or troubleshooting.

## THE HEALTHSTAR REBUILD

**Filling System:** Complete upgrade with stainless steel contact parts designed for specific applications and install new product filter housing(s).

**Air System:** New piping of air system as required with new filter housings

**Extruder/Parison Head:** Rework or replace barrel and screw, install new motor and drive, and/or rebuild existing new parison to meet new application.

**Take Out/Deflashing Assembly:** Build a patented top deflasher into the machine for smooth operation.

**Guards and Safety:** Complete safety interlocks with hydraulic lock-out and quick pressure dump. Additional guards incorporated where needed. Manual function security code through PLC for manual operation

**Electrical Upgrade:** Full PLC machine control with plasma touch screen interface and user-friendly prompts for easy and precise control.



The finished machine is shown with optional remote screen. The finished product compares with a new machine at an unbelievable cost.

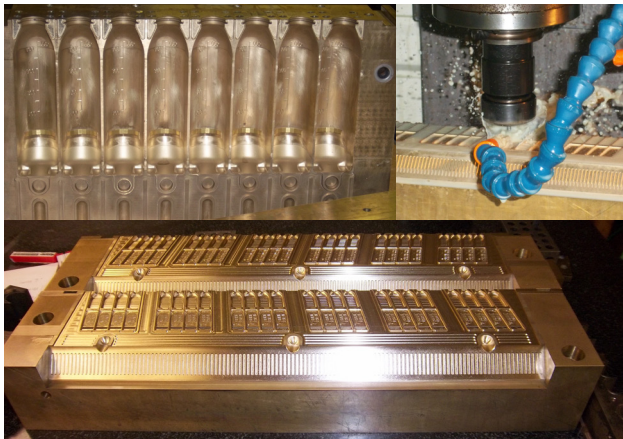
The result is a "LIKE NEW" machine that is better than when it left the OEM's factory!



# Complementary BFS Equipment

**CUSTOM BUILT BY HEALTHSTAR  
To User Specifications**

- ★ **Mold, Parison Head & Fill Station Lift**  
For Transport, Installation and Removal
- ★ **Spin Welder & Over Capper**
- ★ **Deflasher for Hydraulic Trimming of BFS Strips**
- ★ **Vial/Ampoule Labeler**
- ★ **Cartoning Machinery**



**COMPLETE MOLD MANUFACTURING  
& DESIGN SERVICES**



**THE FINISHED PRODUCTS**

## **HealthStar, Inc.**

Head Office US: **781.961.5400** Fax: **781.961.5456** Email: [info@healthstaronline.com](mailto:info@healthstaronline.com)

Head of Sales: **CJ Cote** Phone: **781.961.5400 x32** Email: [ccote@healthstaronline.com](mailto:ccote@healthstaronline.com)

President India Operations: **Lal Sugand** Phone: **+91 9820503219** Email: [lalsugand@hotmail.com](mailto:lalsugand@hotmail.com)